

BigMac's Entertainer Help

Introduction

We hope this manual will help you to learn to control BigMac's Entertainer as fast as possible, and that there are no question open after reading this Manual.

Welcome

Welcome to BigMac's Entertainer Help

You have purchased a flexible media player with comfortable Karaoke Engine and all needed tools for Music Events, especially Karaoke Events.

What's new

- V 1.24 Bugfix crash adding a singer to the singers list after sub dialogue was closed once, codec probs with some CDG+MP3 couples solved, help files (manual) added
- V 1.23 Added singers song list to save several songs and automatically play hem in Auto mode, when it is the singers turn.
 - Search filter function for song list changed.
 - Report Export for music lists for Event owners to pay the fee related to really played songs during an event. (GEMA, ASCAP, BMI etc.....)

Getting Started

Getting Started

System requirements
Getting Help
Purchase & Activation

System requirements

Min. system requirements for BigMac's Entertainer

The minimum requirements are an IBM compatible personal computer with a minimum INTEL core processor or comparable AMD CPU and a graphics adapter with minimum 256MB memory. We recommend to use INTEL CPU's and NVIDIA graphics or ATI graphics poss. with two independent outputs for main and secondary monitor e.g. Video or a second VGA/DVI outlet, which give the best results of functionality. As audio hardware any windows-compatible hardware is supported. Supported Operating Systems are:

Windows XP all editions, min. SP2
Windows 7 all editions x86 and x64 version, min. SP1
Vista is possible but not tested. Use it on your own risk.
Windows Server in all versions related to the above officially supported
Windows generations. E.g. 2003, 2008
Older Windows OS's are not supported.

On Windows XP we recommend to install the Windows Xp codec pack. It is a freeware and ships all necessary codecs for running video and audio media properly on your system. For Windows 7 we recommend the use of the standard Codec Set shipped and installed with Windows. Do not install additional codecs on Win7. It is not necessary and can possibly cause codec mismatch as Win 7 does not accept add. codecs.

Getting help

If you need further help you can contact us by homepage contact form or by Email.
<http://www.bigmac-karaoke.net>
Email: registration@bigmac-karaoke.net

Purchase and activation

BigMac's Entertainer is shipped basically as Evaluation version. You have all functions available but as long as the software is not activated on all displays you will get the info displayed as running text across the screen that it is an evaluation-version .

To get rid of this you have to purchase an activation key and activate the program.

1. Registration

Click on Help/Activation
A sub-dialogue for registration and activation will appear.
Bring your computer online. Type in your full name (registration name) and a valid email address and click on "Send registration info".
The program will send your registration data to BigMac Studio.

2. Purchase

To purchase an activation key click on the PAYPAL links in the left lower corner or go to

german: <http://www.bigmac-karaoke.net/order/default.html>

english: http://www.bigmac-karaoke.net/order_enu/default.html

Choose the license you want to purchase, click on "Jetzt kaufen" and follow up the PAYPAL instructions. For payment give the same information as in the registration data you entered in the software's registration. As soon as the money has arrived BigMac Studio by PAYPAL, you will be sent an activation code which is created for your copy of the software, your hardware and your registration info. If you want to move your software to another computer, ask BigMac Studios for assistance and possibly a new activation key.

3. Activation

When you have received your activation key by Email, go to the activation dialogue again and copy the activation key string to the upper field and click on "Activate"

The program will confirm the successful activation and close the dialogue. The program now will be unlocked and the evaluation message will disappear.

Program Use

Program Use

- Import Media Folder
- File Settings
- Video Settings
- Audio Settings
- Program Mode
- Entertainment Settings
- Language Settings
- Jingle Settings
- Skins
- Media Report
- Media List export to EXCEL

Import Media folder

In all program modes the import of media files to the corresponding list has to be done by Option/Lists/Add files.

How the media files are imported is defined in the **File Settings**.

The program imports all names of files matching to the actual set program mode and only in that media list of this mode. So each mode has an own media/song list.

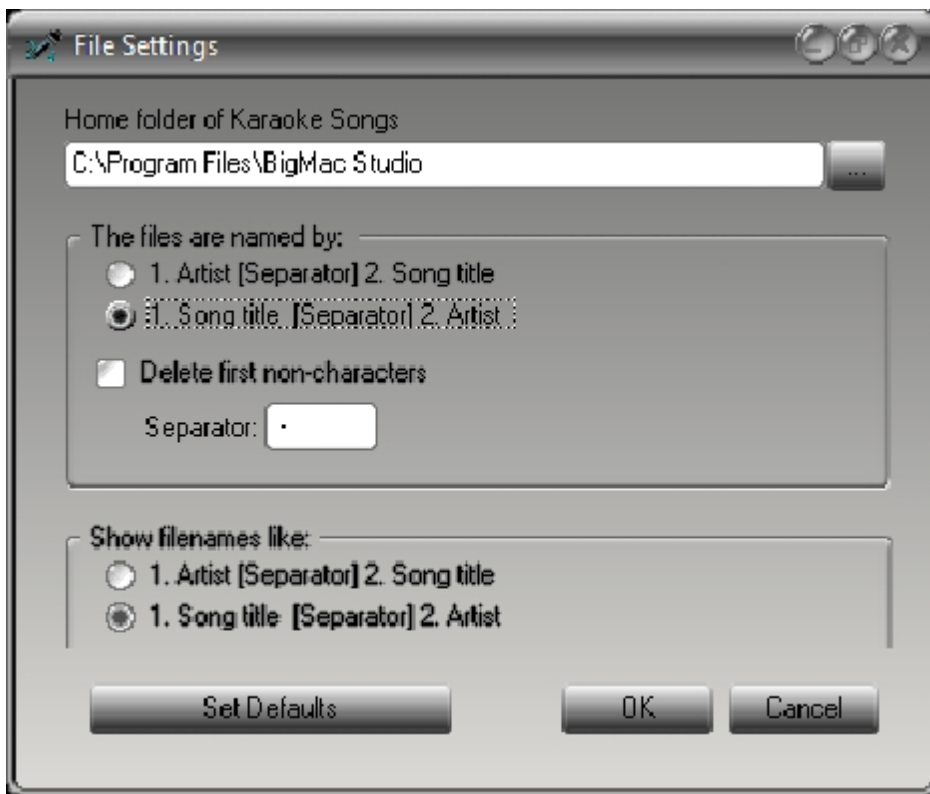
All sub folders in the chosen media folder will be read in.

If media is added to the folders the import has to be done once again to actuate the list in the program.

File settings

To tell the program, how the files are named you can set this before in Option/Lists/File Settings.

In the appearing dialogue you can tell the program how they are named and how to display them in the song list in the surface. The setting you are doing in that submenu are global for all program modes.



On top of the dialogue you can set the base folder for all medias but this is normally not used and can be kept as is.

In the top area you have to select how the files are named. This can be like 1. Song title / separator (normally Blank/minus/blank) / 2. Song artist or otherwise. It depends how the files are named.

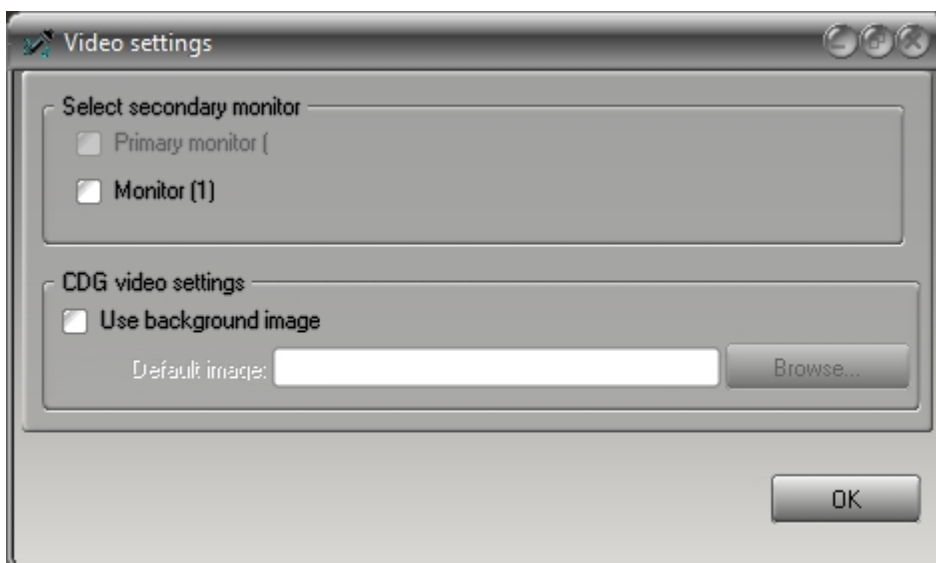
By the checkbox Delete first non-characters you can ignore numbering of tracks. In this case the numbering will be ignored in the list.

In the lower area you can set how the songs have to be displayed in the list.

Video Settings

In the Video settings in the lower section you can define a background image like a logo or similar, which will be displayed in the pause between two tracks.

In the upper section you can define, which additional monitors should display the played media in full screen mode. This setting is only for Karaoke and Video Modes

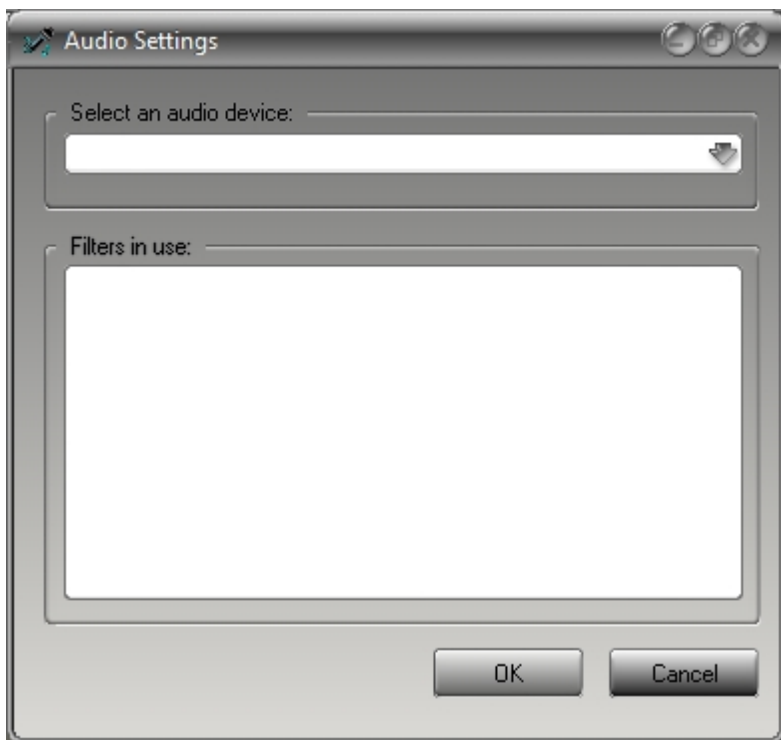


The changes will take effect as soon as you click on OK button.

Audio Settings

In the dialogue audio settings you can watch the filters (codecs) used for the actual playing media. Here it is also possible to change the output for jingles (when no actual media is playing), but it has to be a different to that the other media use!

Normally it is not necessary to make changes here, and it can be difficult for non-professionals. If there is any need to change anything, because of playback problems contact BigMac Studio for Support.



Program Modes

BigMac's Entertainer can work in 4 program modes
You can select the mode by click on Option/Program Mode

You have the choice for

- [Audio Mode](#)
- [Karaoke Pro Mode](#)
- [Video Mode](#)
- [Karaoke Easy Mode](#)

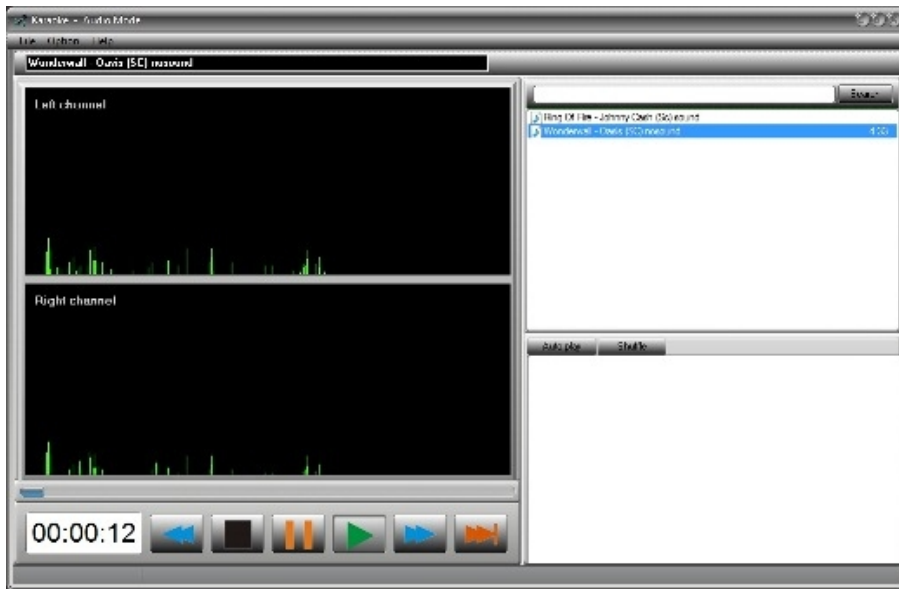
Each Mode is for special Media Playback

Audio Mode

In Audio Mode You can play nearly any Audio format like WAV, MP3, WMA

The possibility to play such formats depends on the installed codecs in Your OS.

In Windows 7 there is no necessity to install further codecs as those installed with the operating system.



In the surface of this mode you see function elements for controlling Play, Stop, back winding, forward winding, Pause and skip to end. These buttons are explaining themselves. The skip to end button causes a jump very close to the end of a track to shorten time if at the end of a track is too much dead time.

In the right upper area you see the song list with search filter function above. Basically you have to tell the program the path where it can find all audio files. This can be done by clicking on Option/Lists/Add files, see also [Import Media Folder](#). Each program mode has its own media folder.

You have to show the program the folder and it will search for all matching media files in that folder and its sub-folders. Before doing this you have to set up the [files settings](#). in the right lower section is placed the play list which can automatically played by Autoplay or shuffle or manually. The wanted mode can be activated by the two buttons "Autoplay" and "Shuffle"

If deactivated the play list is played manually by the standard play control buttons.

You can place media to the play list by drag and drop them from the song list.

And you can change the order also by drag & drop internally the play list.

The timer in the lower left corner displays the elapsed time of the track or of you click once on it you can switch to show the remaining play time of the track and back.

In the display preview field you see the graphs of left and right audio channel.

With right mouse button on the preview area you can switch them between waveform and spectrum analysis.

Searching in the song list can be done by typing the search string in the field above the song list and pressing enter or mouse click on "Search" button. Songs can also be played by selecting them in the song list or in the play list and clicking the play button, or simply double clicked in the lists.

Karaoke Pro Mode

In Karaoke Pro Mode You all the same functions like in [Karaoke Easy Mode](#) to play Karaoke Media. But in this mode you have additional functions for Karaoke Events.



In the surface of this mode you find a singers play list, where you can assign a whole list of singers by nick names. And you can relate sings to the singers by drag & drop from the media list above. You can related more than 1 song to each singer and control this by right mouse click on the singer and click on show song list. You will get a dialogue with the list and can add songs, delete songs and change their order how they get played. How the singer list is played, if automatically, with pause music etc. can be defined in **Entertainment Settings**. You can create singer by clicking on the left button above the singer list. In the appearing sub-dialogue you can also move singers after an event to the database and move them back and start of the next event, if the same singer is present, to keep his songs in a history and take them back with the pitch and speed settings. Each played Karaoke song if completely played and stopped by the program is automatically stored in the corresponding singers history database and kept if moved to database before the program is closed. The third button opens the history of the selected singer. With the Double Arrow button you can jump to next singer in the list and start his related song. The singer list is played one after the other and the order of singers can be changed by drag & drop. Once a song is played it disappears from the singers place and the next from his song list is placed for his next turn in the round. If there is no song related anymore the singer will be skipped by the program. If the program plays the list automatically or not can be set also in the Entertainment Settings. In Karaoke Pro Mode the functions for pitch, speed are extended. Here you can predefine the settings directly to the related song in the singers list and also in the song list of the corresponding singer. If you want to change the settings for a song in the list you have to unselect "Played" so that the program knows you want to change the settings for the selected singer/song in the list. If the checkbox is activated, the settings will be changed for the actual playing song. A song related to a singer can be deleted by the second button or by right mouse click and click on "Reject Song". So the visible Song will be deleted and the next from his song list moves to the foreground. If there is no further song in his list, the place keeps empty. All deletion can also be done in the song list editing sub-dialogue of course.

Video Mode

In Video Mode You can play nearly any Video format like WMV, MPG, MPEG, AVI

The possibility to play such formats depends on the installed codecs in Your OS.

In Windows 7 there is no necessity to install further codecs as those installed with the operating system.

It can only be necessary to install XVID codec for playing AVI with XVID coding. For this in Win 7 we recommend to install such filters as single, without any other codecs and to keep the Win 7 installed codecs for the other formats.



In the surface of this mode you also see function elements for controlling Play, Stop, back winding, forward winding, Pause and skip to end. These buttons are explaining themselves.

The skip to end button causes a jump very close to the end of a track to shorten time if at the end of a track is too much dead time.

In the right area you see the Video Media list with search filter function above.

Basically you have to tell the program the path where it can find all video files.

This can be done by clicking on Option/Lists/Add files. Each program mode has its own media folder.

You have to show the program the folder and it will search for all matching media files

in that folder and its sub-folders. Before doing this you have to set up the **files settings**.

The timer in the lower left corner displays the elapsed time of the track or of you click once on it you can switch to show the remaining play time of the track and back.

In the display preview field you can watch the actually played Video track add. to the second or further monitors playing it in full screen mode. This can be set in menu **Video Settings**

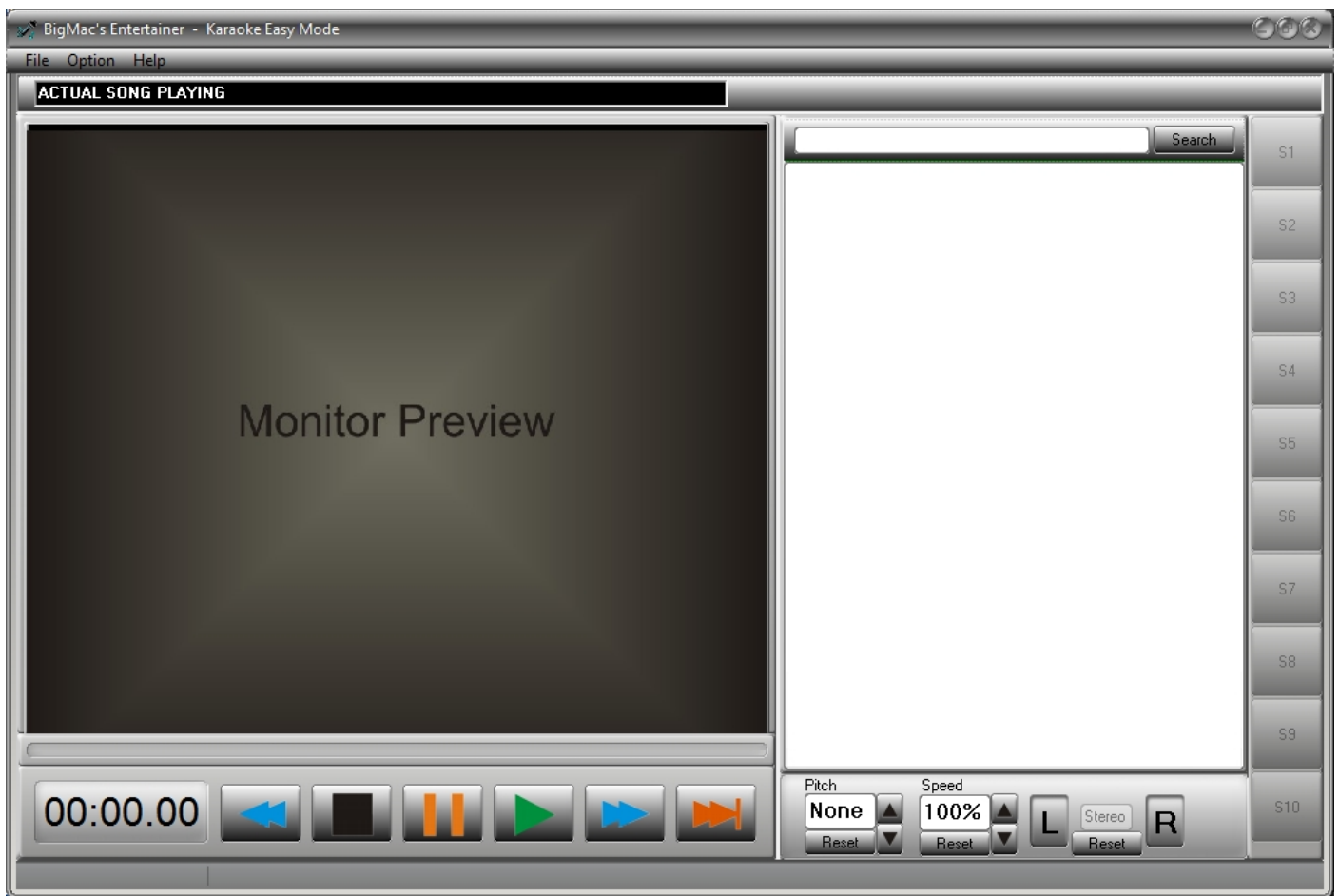
Searching in the Video list can be done by typing the search string in the field above the song list and pressing enter or mouse click on "Search" button.

Karaoke Easy Mode

In Karaoke Easy Mode You can play Karaoke media files like

MPG, MP3+G (CDG), WAV+G (CDG), BIN, ZIP, MPG, MPEG, AVI

For the video Karaoke formats the restrictions for necessary codecs can be taken from the **Video Mode** help text.



In the surface of this mode you also see function elements for controlling Play, Stop, back winding, forward winding, Pause and skip to end. These buttons are explaining themselves. The skip to end button causes a jump very close to the end of a track to shorten time if at the end of a track is too much dead time.

In the right area you see the Karaoke Media list with search filter function above.

Basically you have to tell the program the path where it can find all Karaoke files.

This can be done by clicking on Option/Lists/Add files. Each program mode has its own media folder.

You have to show the program the folder and it will search for all matching media files

in that folder and its sub-folders. Before doing this you have to set up the [files settings](#).

The timer in the lower left corner displays the elapsed time of the track or if you click once on it you can switch to show the remaining play time of the track and back.

In the display preview field you can watch the actually played Karaoke track add. to the second or further monitors playing it in full screen mode. This can be set in menu [Video Settings](#)

Searching in the Karaoke list can be done by typing the search string in the field above the song list and pressing enter or mouse click on "Search" button.

The Karaoke Easy Mode has add. function buttons for pitching up and down the actual track without record player effect and also

to change the speed or both together. The pitch is done in half tone steps and the speed in percent to the original speed.

You also can mute one of the audio channels by clicking on the other channel button and you will get that channel

sent to both output channels. The advantage is to eliminate one of the Karaoke channels if on one of them the main vocal is played. Clicking Rest will reset all changes you have made to the corresponding function.

Entertainment Settings

In the sub-dialogue Entertainment settings (Option/Entertainment Settings) you can define all additional functions for Karaoke Pro Mode.

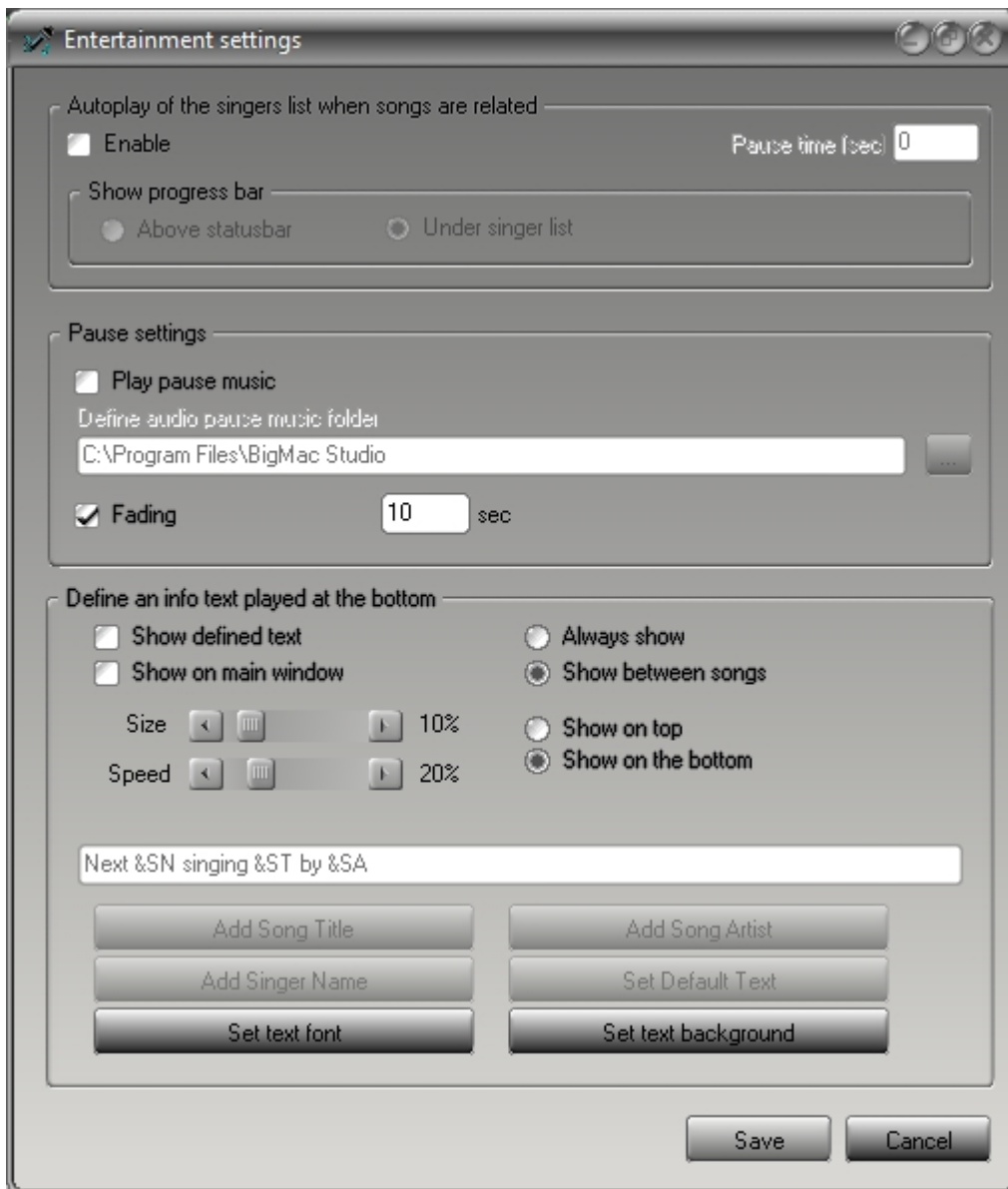
In the top section you can activate Auto play of the singer list to automatically play one after the other and you can define a pause time between the tracks to give singers time to come to the stage for example.

If auto play is enable you can define if you want to show the pause progress bar Above the status bar of the track or under the singer list. The progress bar will appear as long as the pause is active and always show the remaining pause time.

In the middle section you can enable pause music. This can only be played if Auto play is not enable.

Pause music and Auto play is not possible in same time. The checkbox "Fading" enables/disables the fading in/out of pause music. In the field for define audio Pause music folder you can set the folder where the audio files for pause music are stored. The program will take the music from that folder one after the other and play them in pause.

In the lower section you can define an info text banner running through the screen in Karaoke Pro mode. It can be defined if it is played on top or at the bottom of the screen. It is possible to automatically display the next singer with his song and the artist of the song and/or any add. text you want to display, like e.g. info about next events and locations and much more. The size of the text, the font, the speed of the banner, the background color and the text color can also be defined here. The program takes the info about the next singer, song and artist from the singers play list. The banner function is activated when the first playback/singer is started not by play button but by the skip button above the singers play list. In this dialogue you can also define if the text is displayed always, or only in the pause and if it should be displayed only in the external monitors or also on the main window (preview display in program surface)



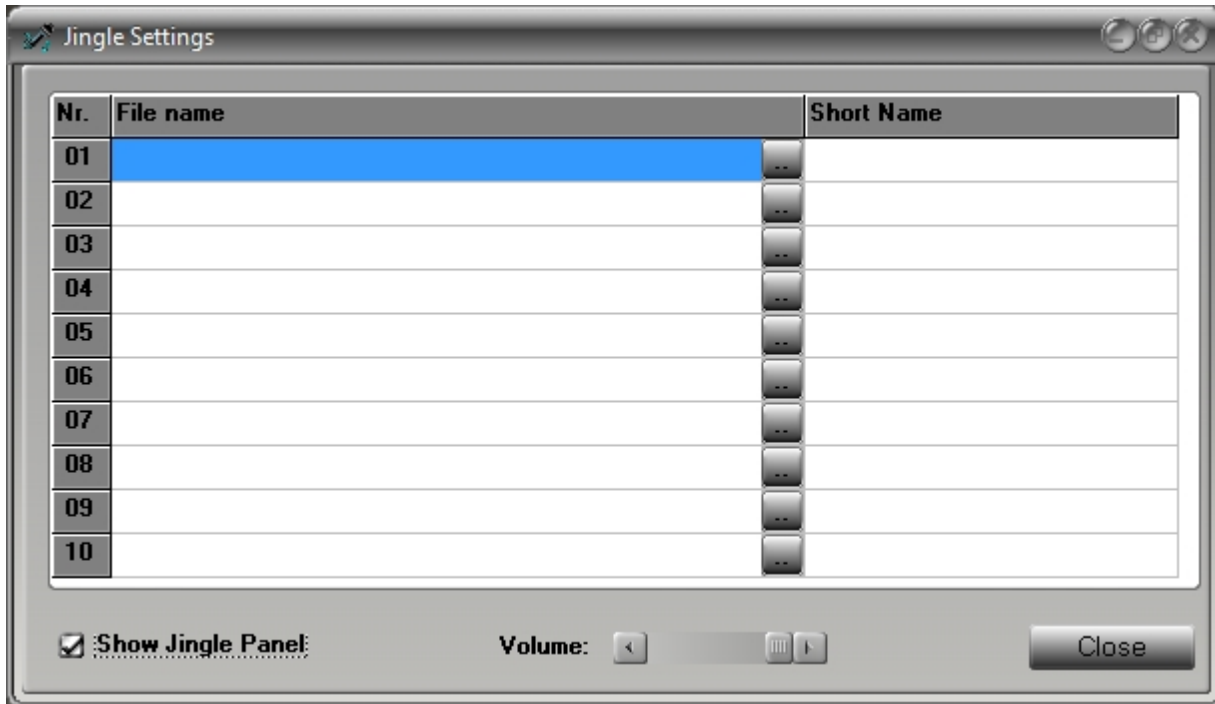
Language Settings

The language of the programs surface can be changed by click on Option/Language settings. In the sub-menu you can choose the language you want from the most used world languages as English, German, Italian, Portuguese, Spanish and French. All language dependant functions of the program will change to the chosen language.

Jingle Settings

In all program modes you have the possibility to play jingles independant from the actual playing media. Normally the jingles (Audio media files) are send using a different sound device to not cross the other playing media. In case that the actual playing media is affected this can be configured in **Audio Settings**. But do not change settings there, because basically it is not necessary. Or get remote support by BigMac Studios for the right settings.

For playing jingles you have to activate the display of Jingle buttons, which will appear in all modes if once activated, in the sub-menu Option/Jingle Settings.



In this dialogue you can search for the Jingle Audio Media files, related them to buttons and give the corresponding button a name, how it will be displayed in the programs surface. The Jingle Buttons will be displayed at the right border of the program window. In the dialogue it is also possible to adjust the volume for jingles. The settings are stored when the "Close" button is clicked, and the buttons will appear in the surface of the program.

Skins

BigMac's Entertainer has included some different program surface skins which you can select by option/skins and choosing the skin you like most.

BMI/ASCAP/GEMA report

For official events it is sometimes necessary to pay a fee for the music and other media played on the event. The event owner has to pay a fixed fee for it or has to send a play list of the media played on an event to pay for the really played media. For this purpose the software has an integrated recorder which records the played media during an event and can save it or export it to an EXCEL file to give the printed out list to the event owner to forward the info to the in his country responsible institution.

Dependant on the language settings the responsible institutes are displayed in the menu when you click on file and see xxxx report.

The institutions for USA (BMI/ASCAP), UK, Spain, Portugal, Italy, and Germany (GEMA) are used. For others the corresponding part in the exported EXCEL list has to be changed.

Export to EXCEL

With this function you can export the actual loaded media lists to an EXCEL file.
The corresponding lists of the different modes will result in separate maps in the file.

This function is ideal for creating e.g. song books for Karaoke events.